



Preventable Readmissions Through a Medicare Lens

Arnold Milstein MD, MPH
Pacific Business Group on Health
Mercer Health & Benefits
IHA October 6, 2009



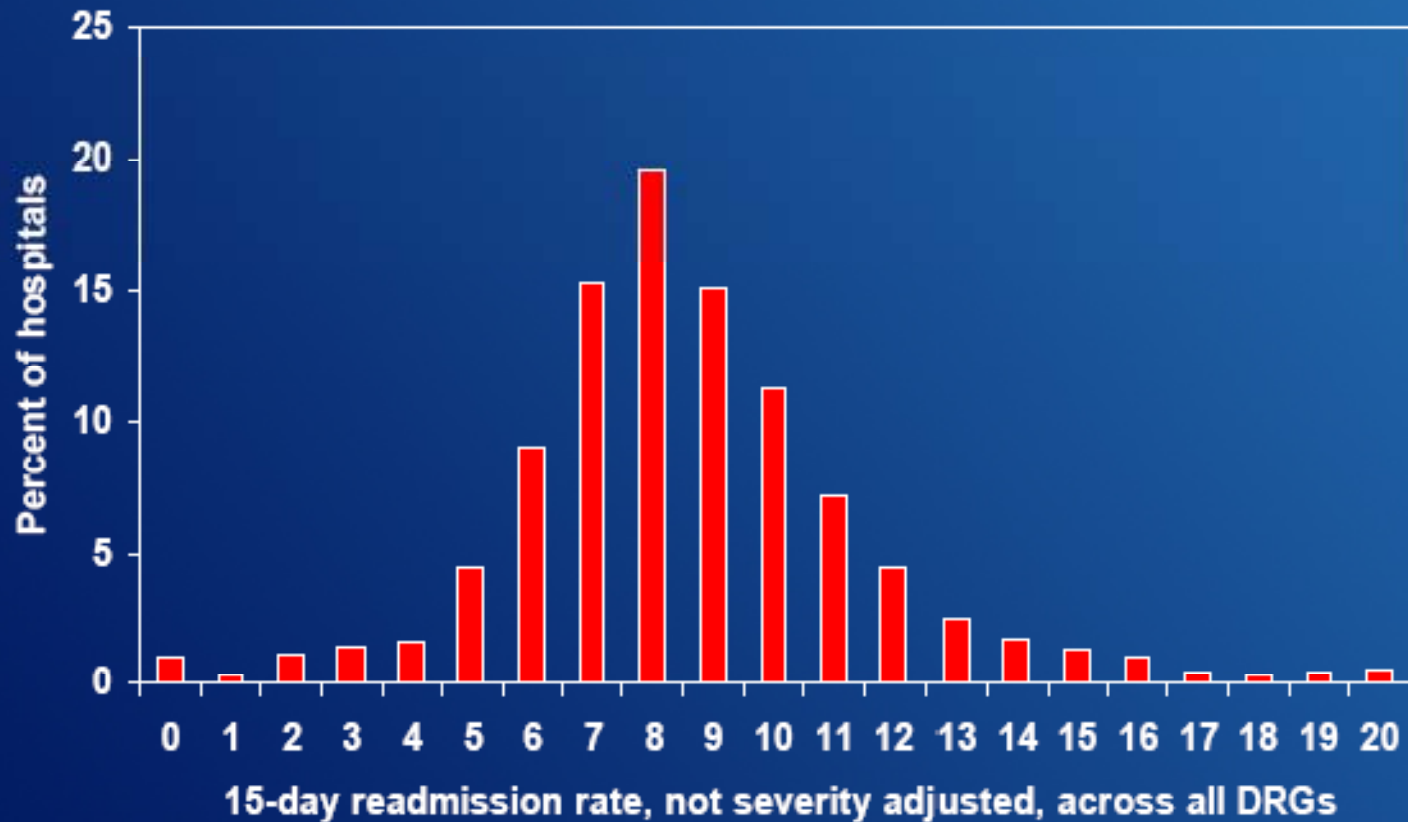
Readmission Rates are Significant and Growing

| | Readmissions | | |
|---|--------------|--------|--------|
| | 7-day | 15-day | 30 day |
| Percent readmitted 2005 | 6.2% | 11.3% | 17.6% |
| Increase in readmission rates 1996 to 2005 | 0.6 | 1.0 | 1.1 |
| Percent potentially preventable (3-M logic) | 5.2 | 8.8 | 13.3 |
| Spending on potentially preventable (billions) | \$5 | \$8 | \$12 |

MECPAC



Wide Variation Across Hospitals in Readmission Rates Before Adjusting for Severity

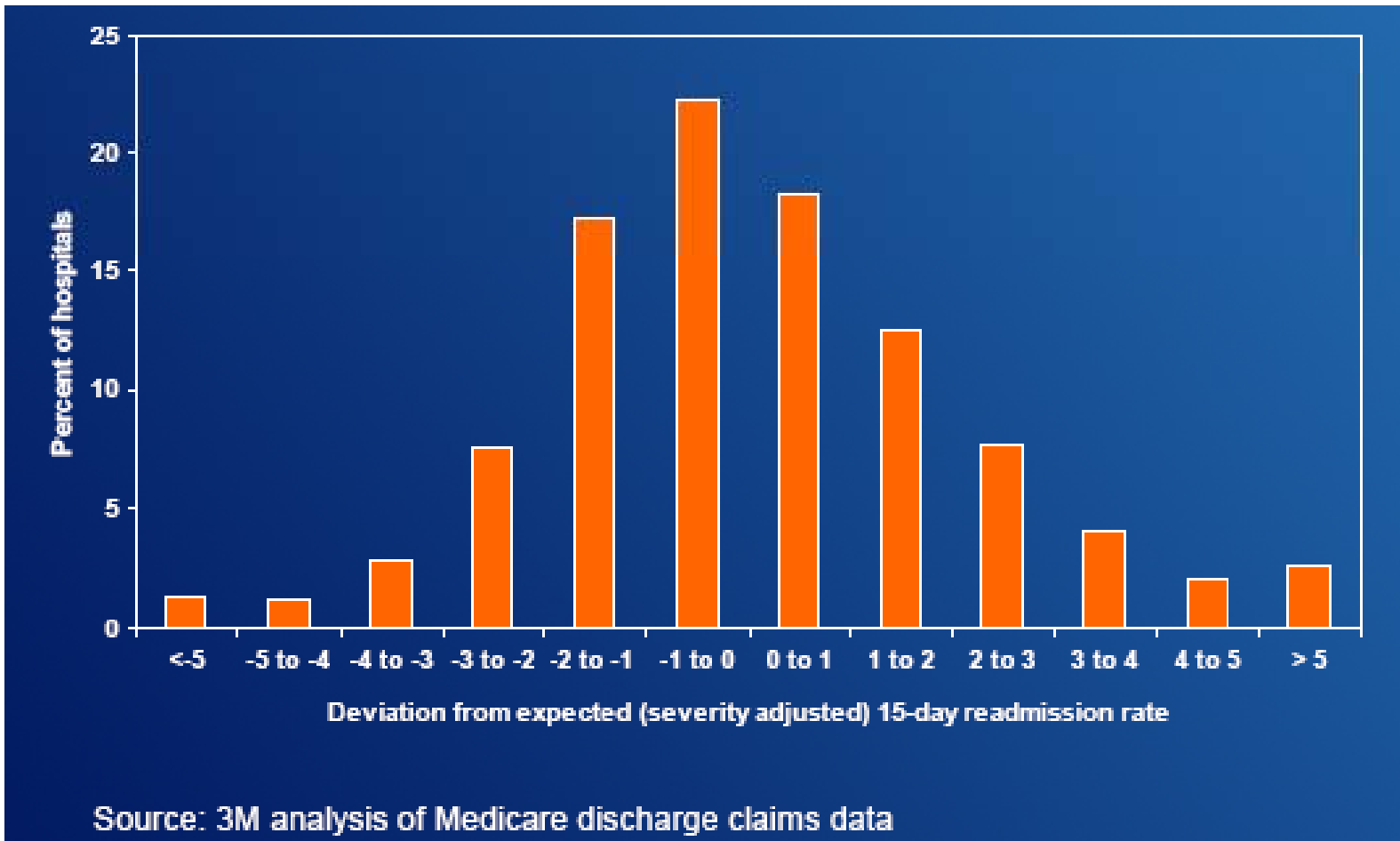


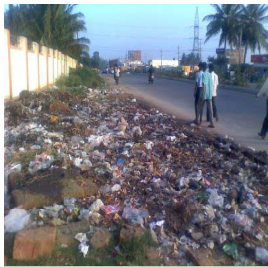
Source: 3M analysis of Medicare discharge claims data

MECPAC

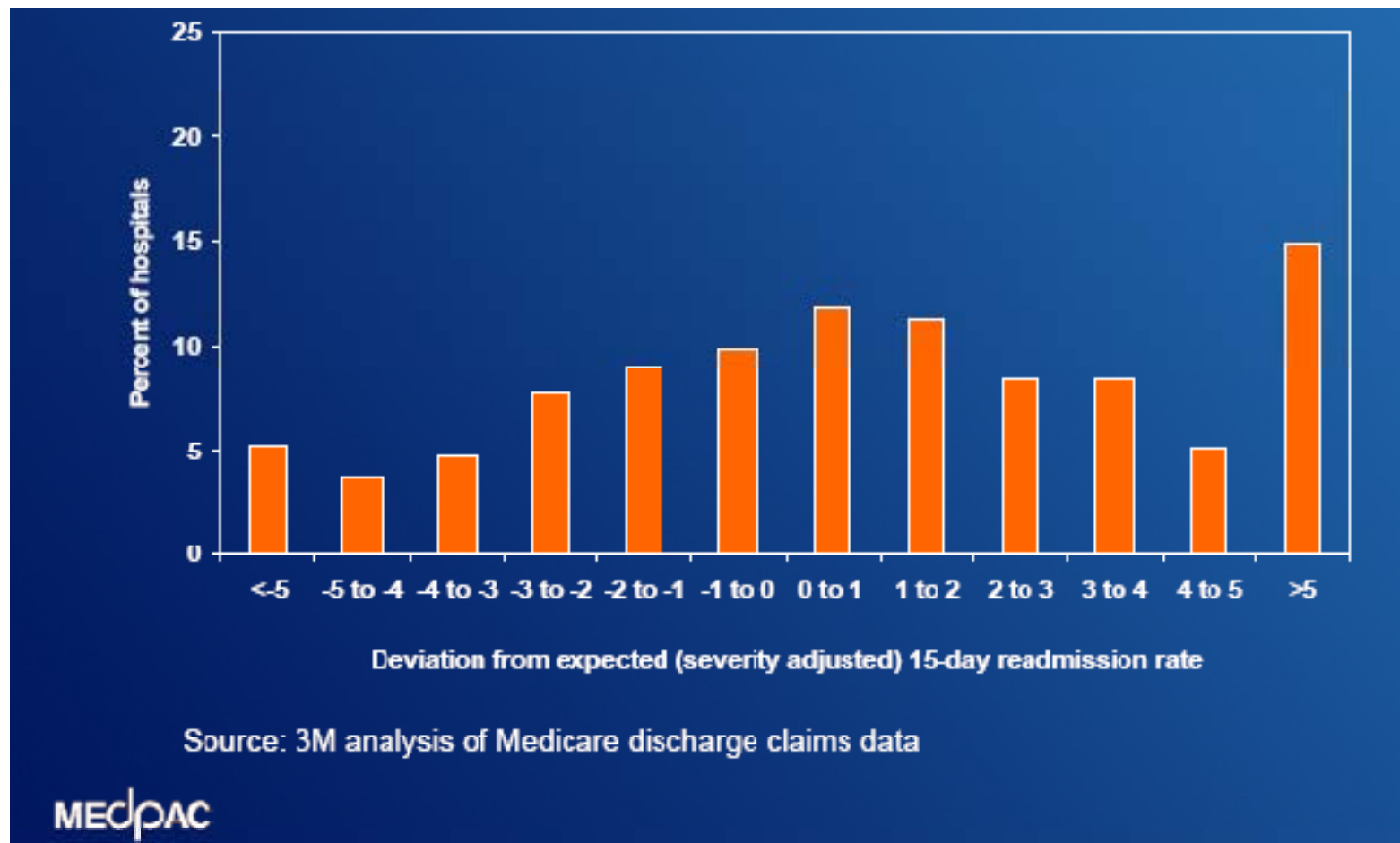


Potentially Preventable Readmissions Vary Across Hospitals After Adjusting for Severity





Hospitals' Risk Adjusted CHF Readmission Rates Vary Substantially





Rocket Science Helpful, But Not Required

- **A+ discharge planning**
- **Pro-active post-discharge telephonic support**
- **Specialized teams manage high risk discharges at home**
- **Systems re-engineering applied to a whole episode of hospitalization**