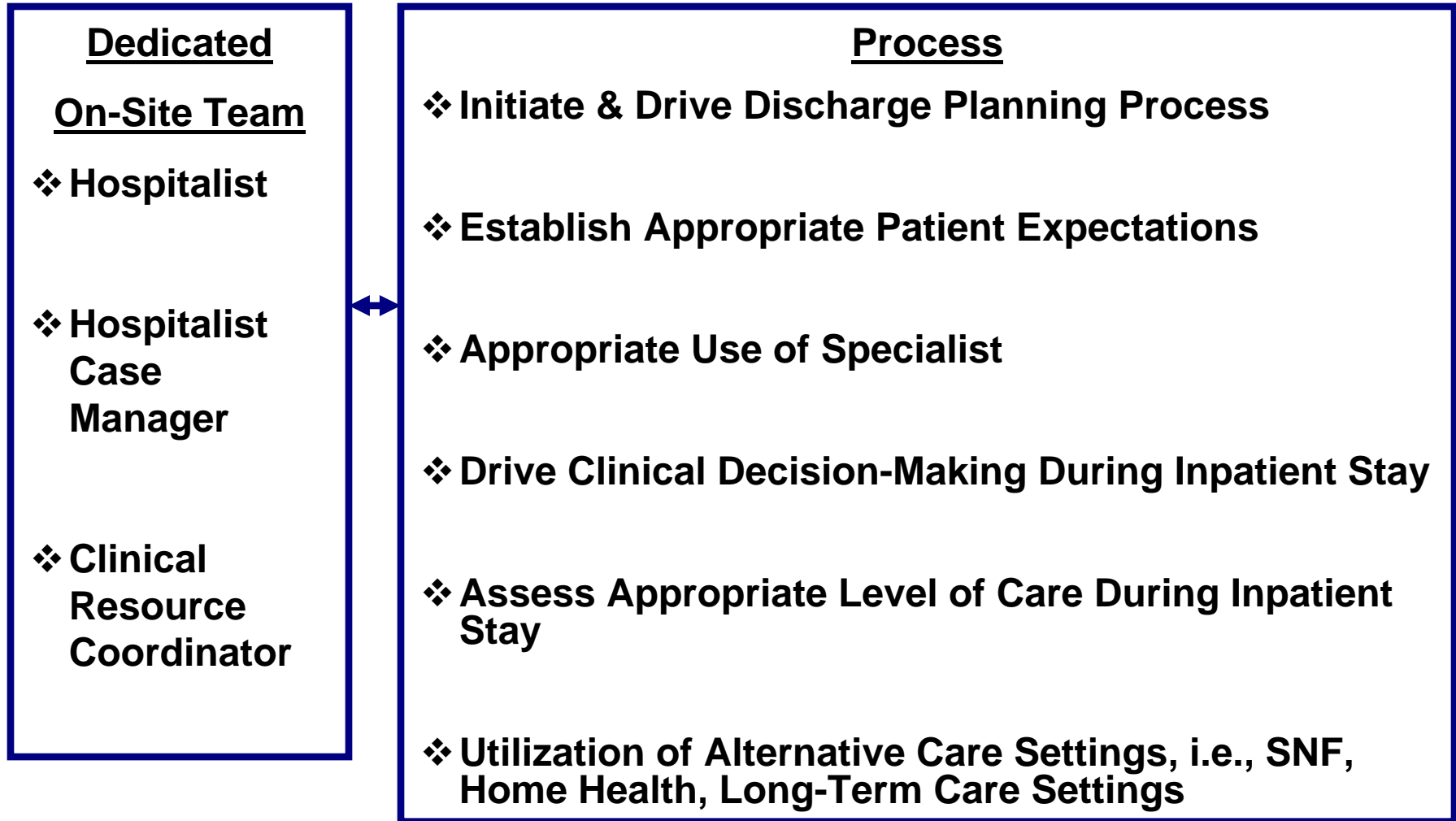


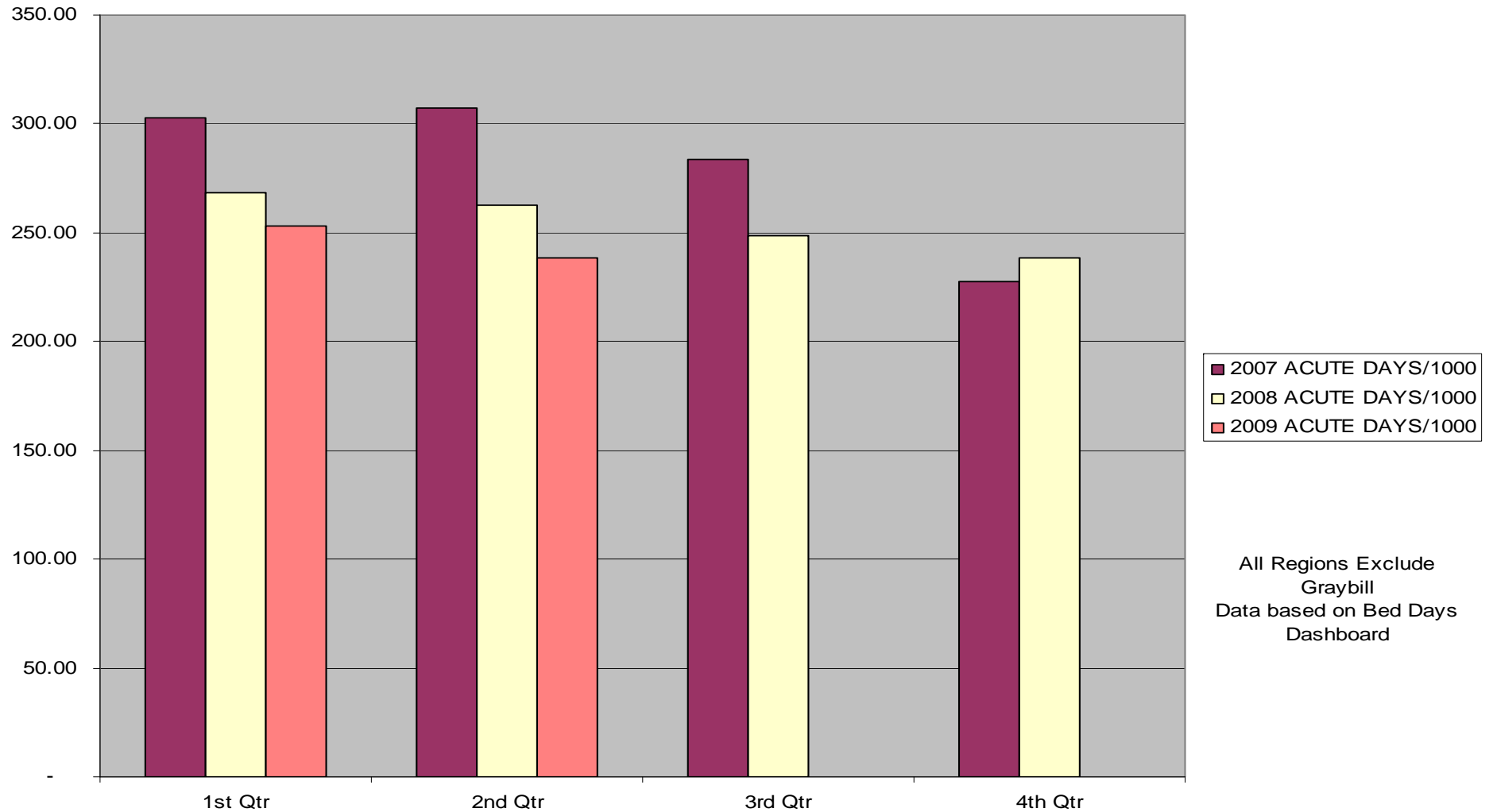
Sharp Community Medical Group Profile

- ❖ **Started 1989 (*20 Years*)**
- ❖ **151,000 plus covered members**
(126,000 commercial / 26,000 senior)
- ❖ **225 Sites**
- ❖ **662 Physicians**
(208 primary care physicians / 454 specialty physicians)
- ❖ **San Diego County-Wide Coverage**
- ❖ **Estimated 180,000 PPO Lives**

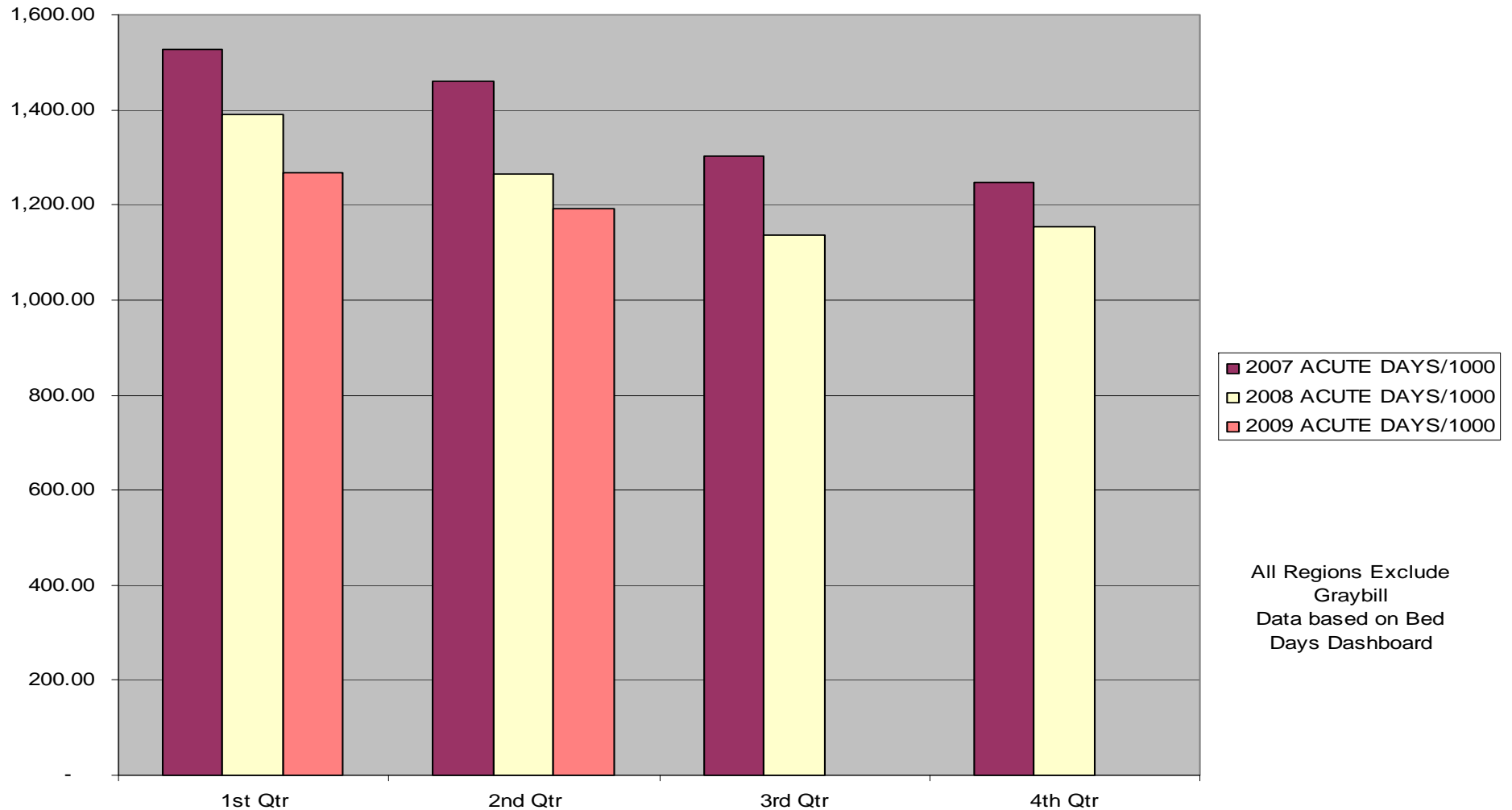
Continuum of Care



Sharp Community Medical Group Commercial Acute Days/1000 Year to Date Comparison



Sharp Community Medical Group Senior Acute Days/1000 Year to Date Comparison



Continuum of Care

Screening, Assessment/Evaluation

Initial Screening

- ❖ Age Threshold-under 18, over 75 years old
- ❖ Diagnosis
- ❖ Family Support
- ❖ Financial
- ❖ Shelter
- ❖ Readmission within 30 days

Continuum of Care

Case Management Referral Form

Referral Reasons

❖ Chronic Care Management

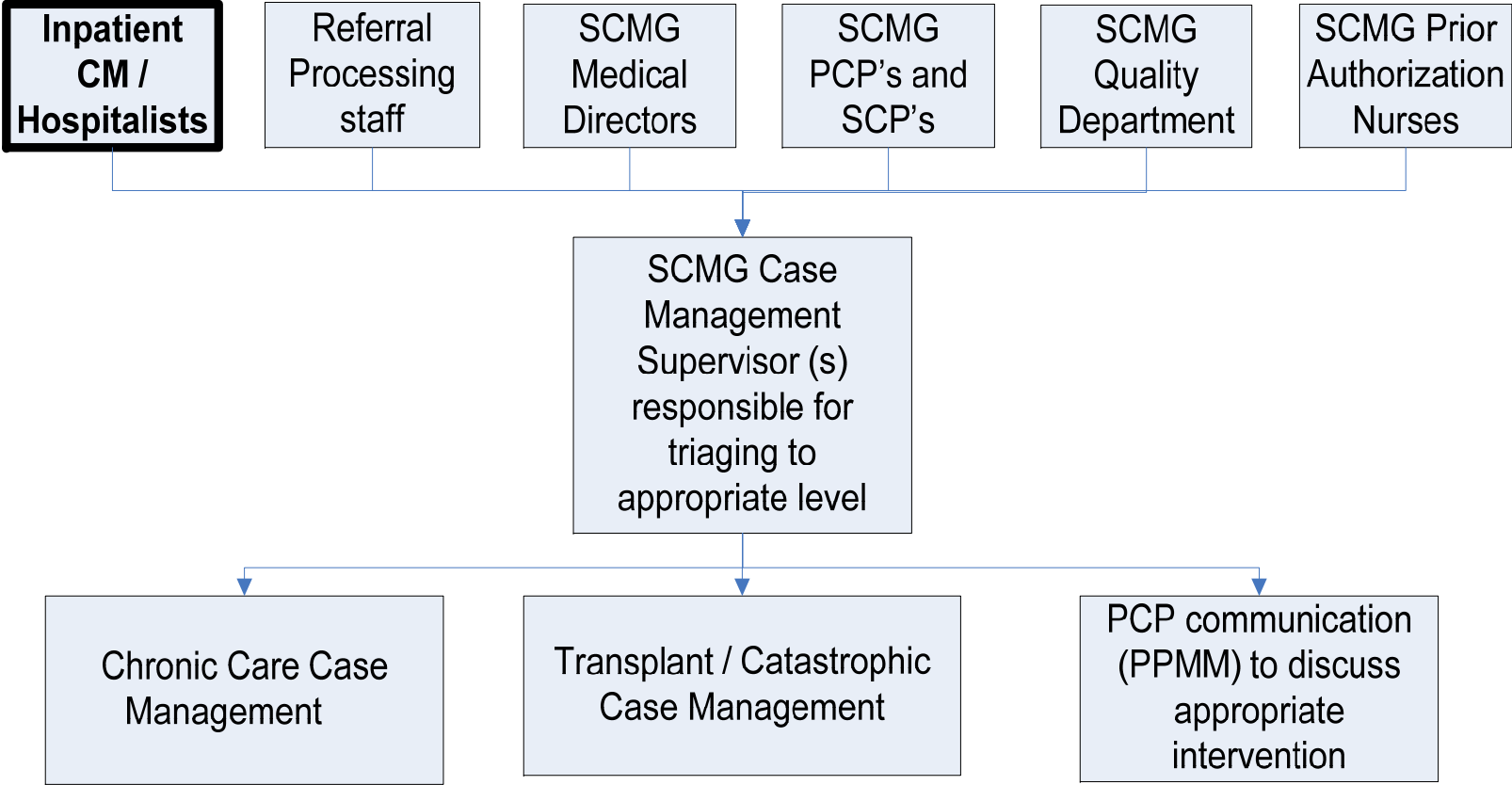
- ❖ Diabetes
- ❖ CHF
- ❖ COPD
- ❖ Dementia (future state)

❖ Acute CM

- ❖ Multiple ER visits (>2 within 90 days)
- ❖ Multiple Hospital Admissions (>2 within 6 months)
- ❖ Readmission within 30 days of Discharge
- ❖ Complex Coordination of Care Post Inpatient or SNF Discharge
- ❖ Recurrent non-adherence to Treatment Regime

❖ Catastrophic/ Transplant

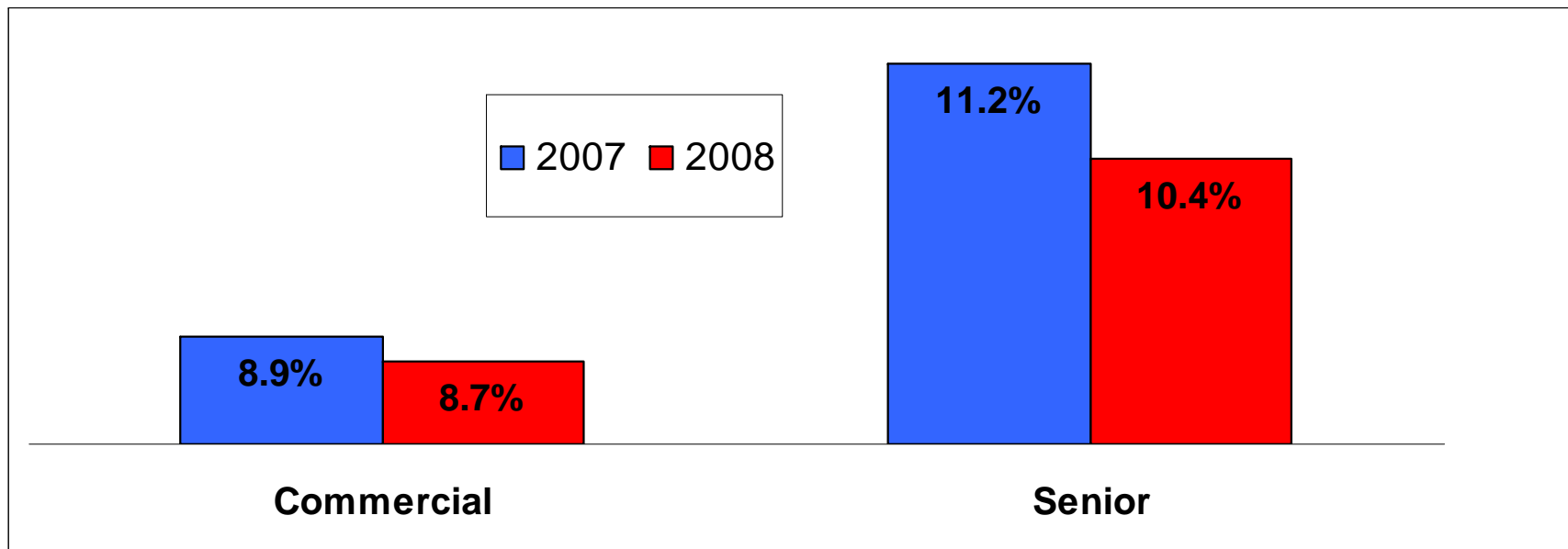
CM Triage



PCP Patient Management Model

- ❖ Primary Care Physicians Conference with SCMG Medical Director and SCMG staff
 - ❖ 2-3 times a week
 - ❖ Referral Review
 - ❖ Discuss Complex Cases
- ❖ Multidisciplinary Team
 - ❖ Increased Involvement in Complex Case Management (High Risk for readmission)

Readmission Rates 2007 Versus 2008



Take Away's

- ❖ Overall process has resulted in improved “Coordination of Care”
- ❖ Missing Level of Care
 - ❖ Need for increased resources in the community to support high risk members (clinical and/or social issues)
- ❖ Challenges:
 - ❖ Data has been a challenge (hospital vs IPA)
 - ❖ Financial support – Who is at risk?